



# MONTHLY MEMBERSHIP PROGRESS REPORT

District 29 I

Results as of: 5/31/2017

GMT: Cindy Gregg

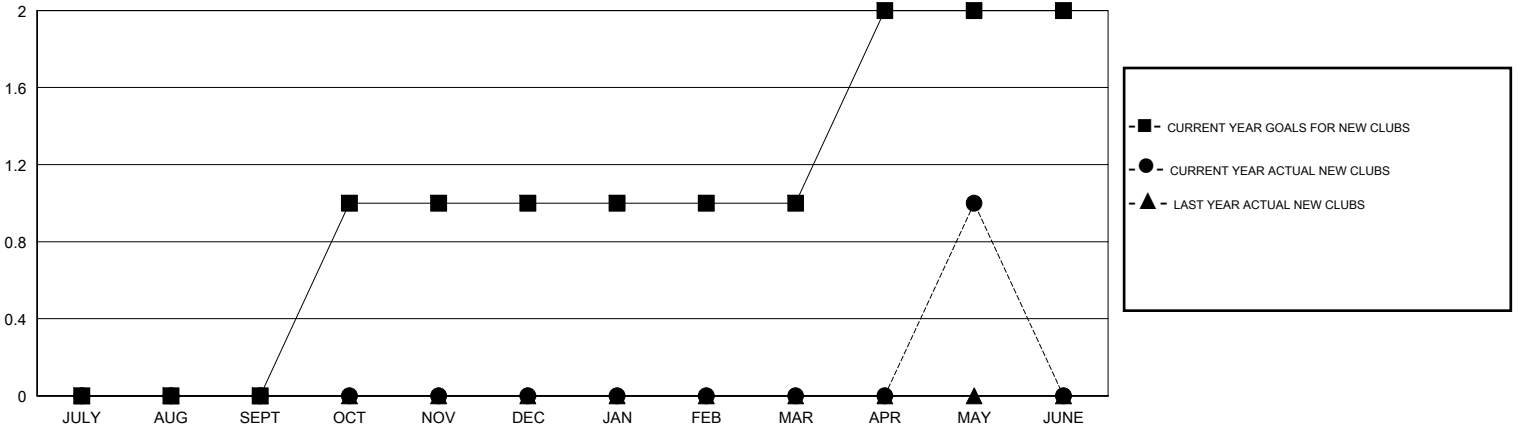
LOCATION WEST VIRGINIA

GMT CA

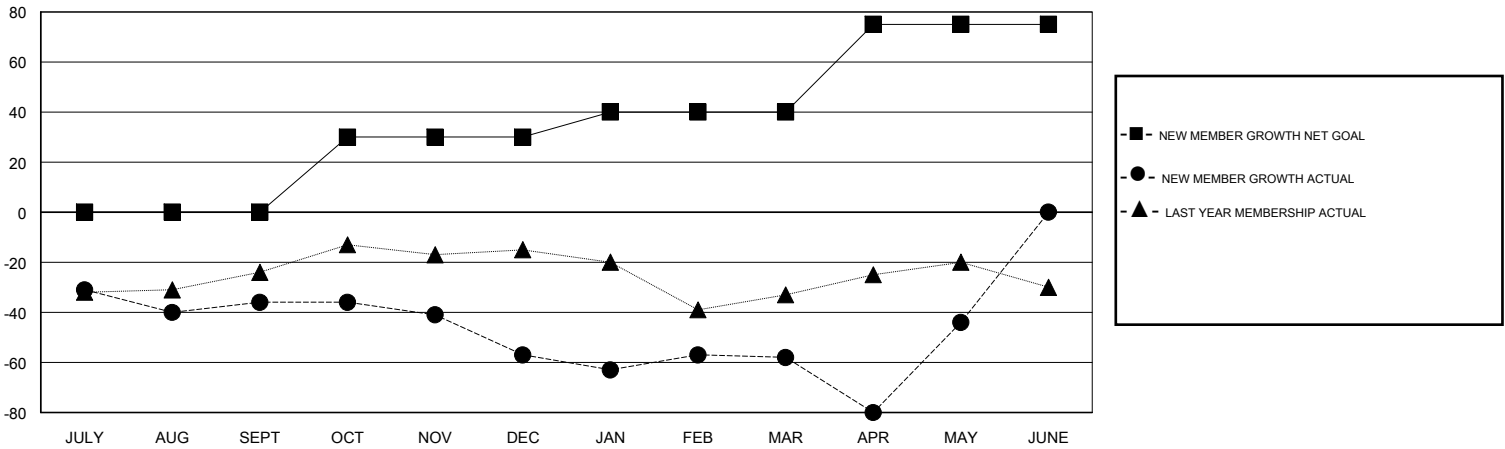
Clubs			
RESULTS FOR 2016-2017			
QUARTER	NEW CLUB GOAL	NEW CLUBS	DROPPED CLUBS
JULY/AUG/SEPT	0	0	0
OCT/NOV/DEC	1	0	1
JAN/FEB/MAR	0	0	1
APR/MAY/JUNE	1	1	1

Members			
RESULTS FOR 2016-2017			
QUARTER	NEW MEMBER GROWTH NET GOAL (not reinstated or transfers)	NEW MEMBER GROWTH ACTUAL (not reinstated or transfers)	DROPPED MEMBERS ACTUAL (including transfers)
JULY/AUG/SEPT	0	33	69
OCT/NOV/DEC	30	18	39
JAN/FEB/MAR	10	31	32
APR/MAY/JUNE	35	46	32

GOALS AND ACTUAL NEW CLUBS CUMULATIVE



GOALS AND ACTUAL MEMBERS CUMULATIVE



DROPPED CLUBS: 3	39 CLUBS OF 57 ADDED 1 OR MORE NEW MEMBERS	<u>GENDER DISTRIBUTION</u>	
DROPPED MEMBERS		MALE	1,041 (66.10%)
DECEASED	29	FEMALE	534 (33.90%)
CLUB CANCELLED	0	TOTAL FAMILY UNIT MEMBERS	469
OTHER	143	FAMILY MEMBERS PAYING HALF DUES	239
TOTAL	172		

[CLICK HERE FOR CUMULATIVE MEMBERSHIP DATA](#)